

INTENTIONALLY

LEFT

BLANK

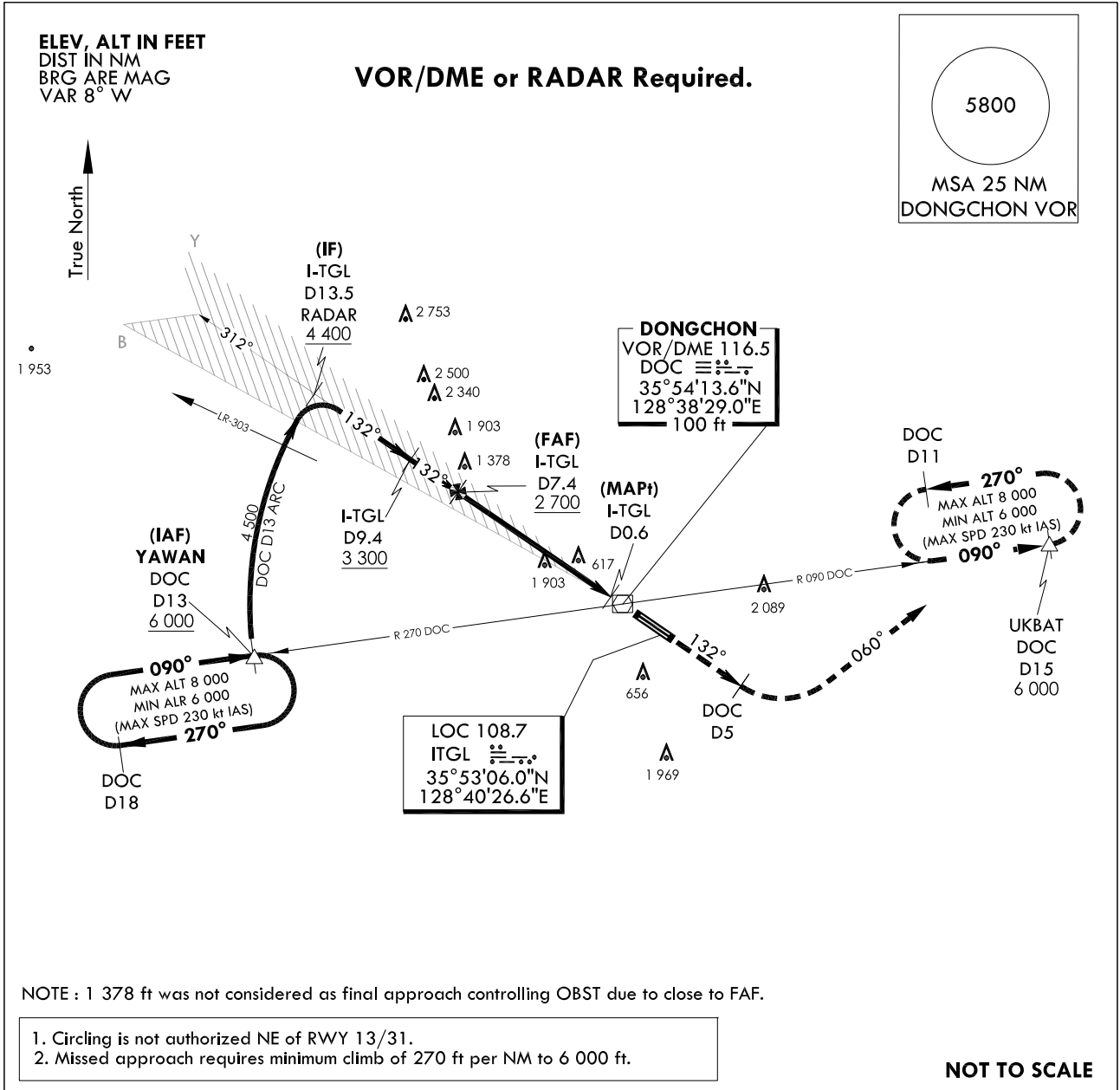
**INSTRUMENT
APPROACH
CHART**

AERODROME ELEV 120 ft
HEIGHTS RELATED TO
THR RWY 13R - ELEV 110 ft
HIGHEST ELEV TDZ 111 ft

DAEGU APP 135.9 346.3
DAEGU TWR 126.2 236.6
365.0

**DAEGU/Daegu Intl(RKTN)
LOC/DME
RWY 13R**

Note : Approach and circle to land under U.S. TERPS.



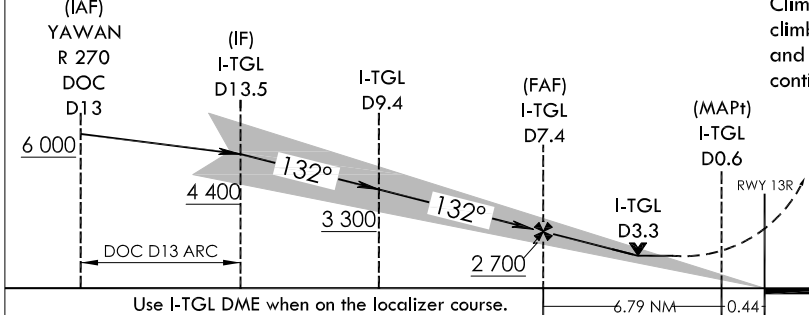
NOTE : 1 378 ft was not considered as final approach controlling OBST due to close to FAF.

1. Circling is not authorized NE of RWY 13/31.
2. Missed approach requires minimum climb of 270 ft per NM to 6 000 ft.

NOT TO SCALE

↑ HDG 132°	DOC D5	HDG 060°	R 090 DOC	UKBAT △ 6 000	MISSED APPROACH CLIMB RATE TABLE						
					RWY 13R	Knots V/V(fpm)	60	120	180	240	300

TRANSITION ALT	14 000
TRANSITION LVL	FL 140



MISSED APPROACH
Climb to 6 000 ft via HDG 132° to DOC 5 DME and climbing left turn HDG 060° to intercept R 090 DOC and R 090 DOC to UKBAT and hold, continue climb-in-holding to 6 000 ft.

CATEGORY	A	B	C	D	E
S-LOC 13R	FULL	1 260/55 1 149(1 200-1)	1 260/60 1 149(1 200-1 1/4)	1 260 - 3	1 149(1 200 - 3)
	ALS INOP	1 260/60 1 149(1 200-1 1/4)	1 260 1 1/2 1 149(1 200-1 1/2)	1 260 - 3	1 149(1 200 - 3)
CIRCLING		1 260 - 1 1/4 1 140(1 200 - 1 1/4)	1 260 - 1 1/2 1 140(1 200 - 1 1/2)	1 260 - 3 1 140(1 200 - 3)	1 300 - 3 1 180(1 200 - 3)
					2 340 - 3 2 220(2 300 - 3)

Change : Information of fix name(NUKEE → UKBAT).

INTENTIONALLY

LEFT

BLANK

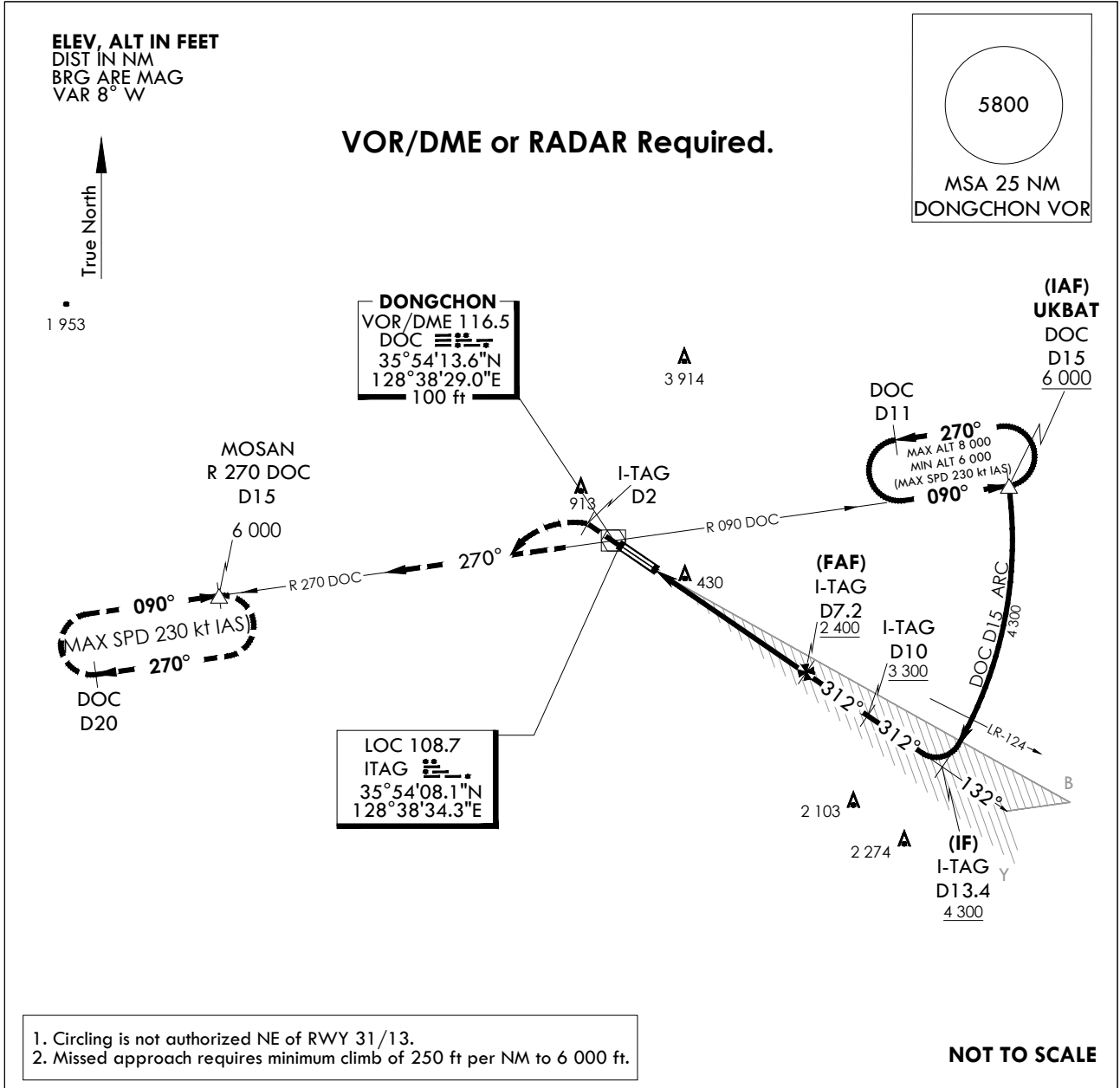
**INSTRUMENT
APPROACH
CHART**

AERODROME ELEV 120 ft
HEIGHTS RELATED TO
THR RWY 31L - ELEV 118 ft
HIGHEST ELEV TDZ 118 ft

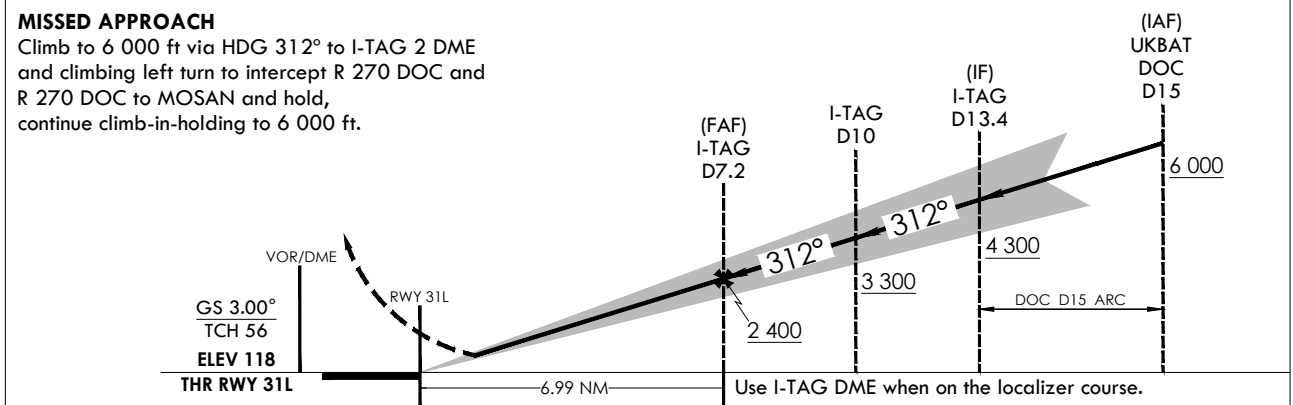
DAEGU APP	135.9	346.3
DAEGU TWR	126.2	236.6
		365.0

DAEGU/Daegu Intl(RKTN)
ILS
RWY 31L

Note : Approach and circle to land under U.S. TERPS.



RWY	Knots	MISSSED APPROACH CLIMB RATE TABLE					
		60	120	180	240	300	TO
31L	V/V(fpm)	250	500	750	1 000	1 250	6 000



CATEGORY		A	B	C	D
S-ILS 31L	FULL		318 / 24	200(200 - 1/2)	
	ALS INOP		318 / 40	200(200 - 3/4)	

Change : Information of fix name(NUKEE → UKBAT).

INTENTIONALLY

LEFT

BLANK

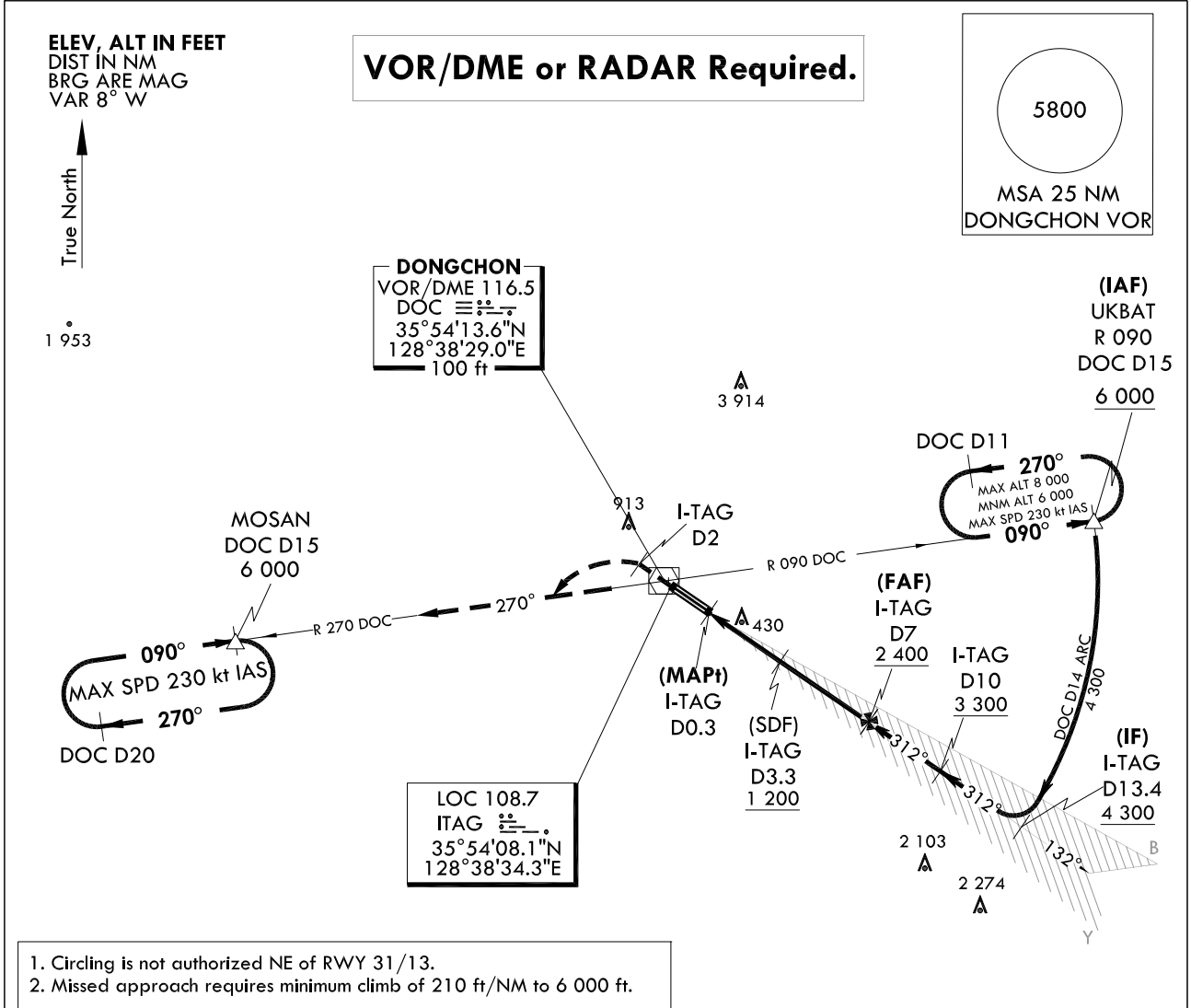
**INSTRUMENT
APPROACH
CHART**

AERODROME ELEV 120 ft
HEIGHTS RELATED TO
THR RWY 31L - ELEV 118 ft
HIGHEST ELEV TDZ 118 ft

DAEGU APP 135.9 346.3
DAEGU TWR 126.2 236.6
365.0

DAEGU/Daegu Intl(RKTN)
LOC/DME
RWY 31L

Note : Approach and circle to land under U.S. TERPS.

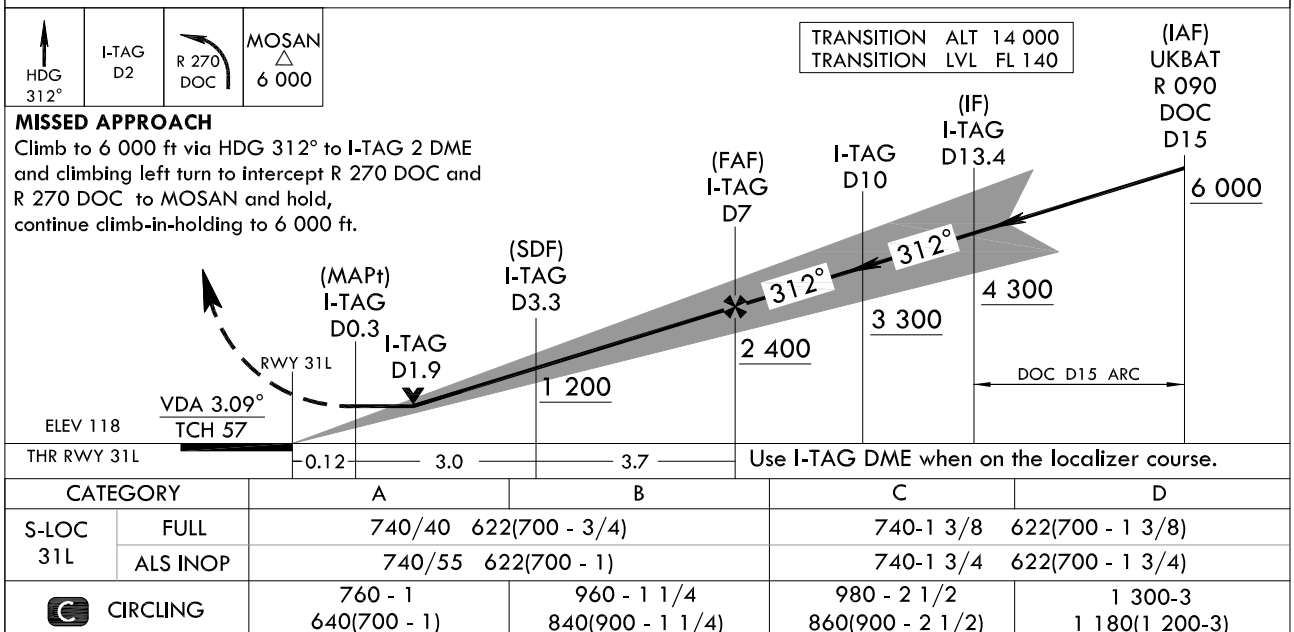


1. Circling is not authorized NE of RWY 31/13.
2. Missed approach requires minimum climb of 210 ft/NM to 6 000 ft.

MISSED APPROACH CLIMB RATE TABLE

RWY	Knots	60	120	180	240	To
31L	V/V(fpm)	210	420	630	840	6 000

NOT TO SCALE



Change : Information of HAT(height of MDA above touch-down zone).

INTENTIONALLY

LEFT

BLANK

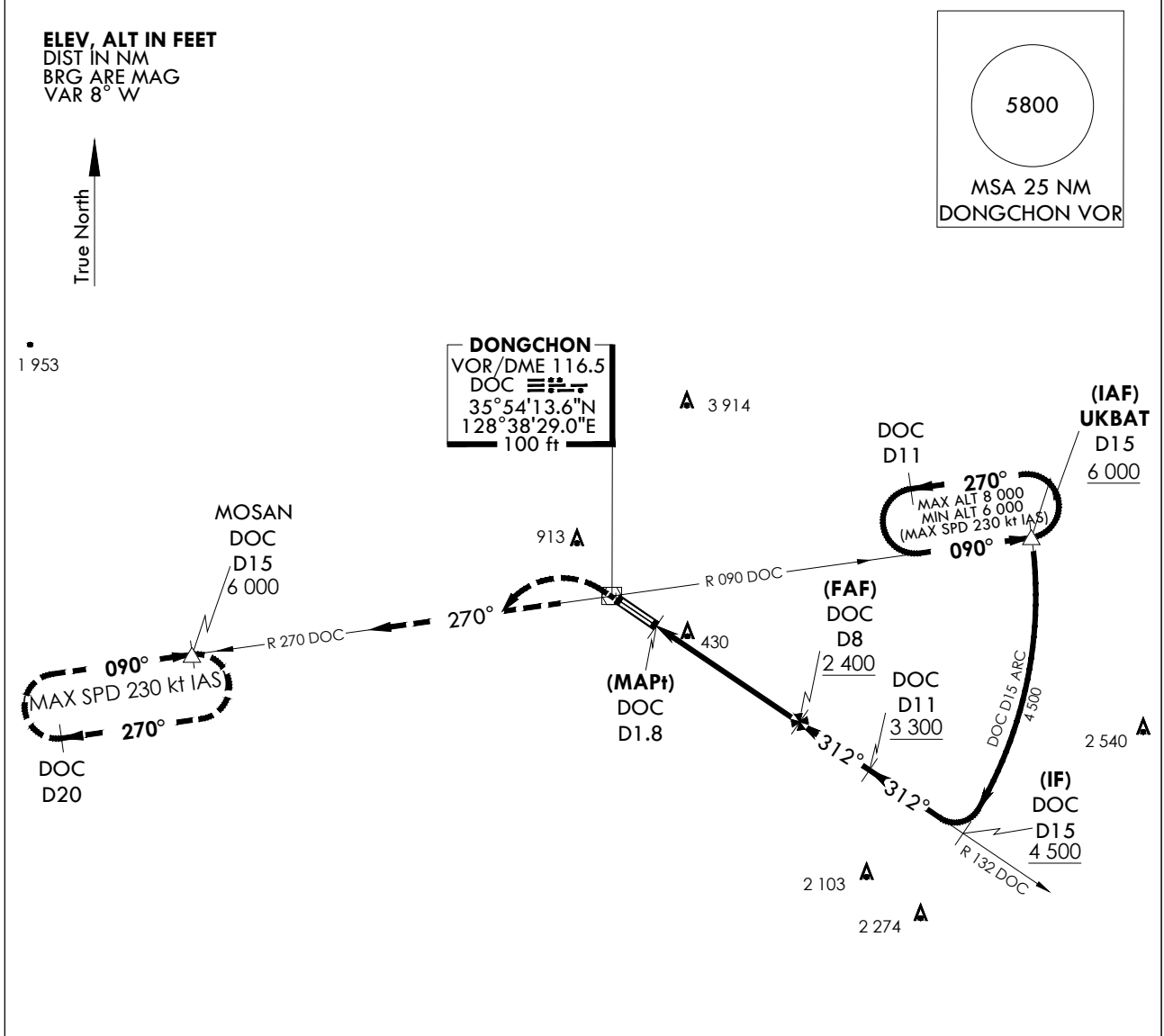
**INSTRUMENT
APPROACH
CHART**

AERODROME ELEV 120 ft
HEIGHTS RELATED TO
THR RWY 31L - ELEV 118 ft
HIGHEST ELEV TDZ 118 ft

DAEGU APP	135.9	346.3
DAEGU TWR	126.2	236.6
		365.0

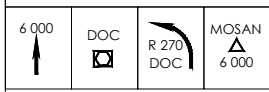
**DAEGU/Daegu Intl(RKTN)
VOR/DME
RWY 31L**

Note : Approach and circle to land under U.S. TERPS.



1. Circling is not authorized NE of RWY 31/13.
2. Missed approach requires minimum climb of 250 ft per NM to 6 000 ft.

NOT TO SCALE



TRANSITION ALT 14 000
TRANSITION LVL FL 140

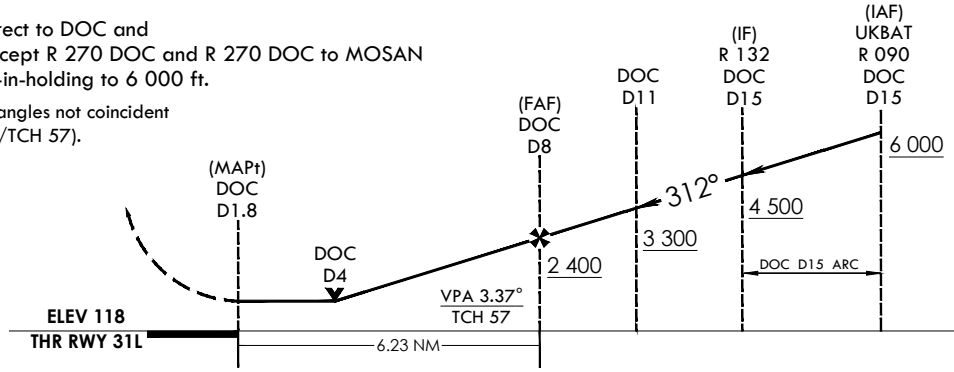
MISSED APPROACH CLIMB RATE TABLE

RWY	Knots	60	120	180	240	300	TO
31L	V/V(fpm)	250	470	700	930	1 160	6 000

MISSED APPROACH

Climb to 6 000 ft via direct to DOC and climbing left turn to intercept R 270 DOC and R 270 DOC to MOSAN and hold, continue climb-in-holding to 6 000 ft.

NOTE : VGSI and descent angles not coincident
(VGSI Angle 3.00°/TCH 57).



CATEGORY		A	B	C	D
S-VOR 31L	FULL	880/40	762(800 - 3/4)	880-1 3/4	762(800-1 3/4)
	ALS INOP	880/55	762(800 - 1)	880-2 1/2	762(800-2 1/2)
CIRCLING		880 - 1 760(800 - 1)	960 - 1 1/4 840(900 - 1 1/4)	980 - 2 1/2 860(900 - 2 1/2)	1 300-3 1 180(1 200-3)

Change : Information of fix name(NUKEE → UKBAT).

INTENTIONALLY

LEFT

BLANK

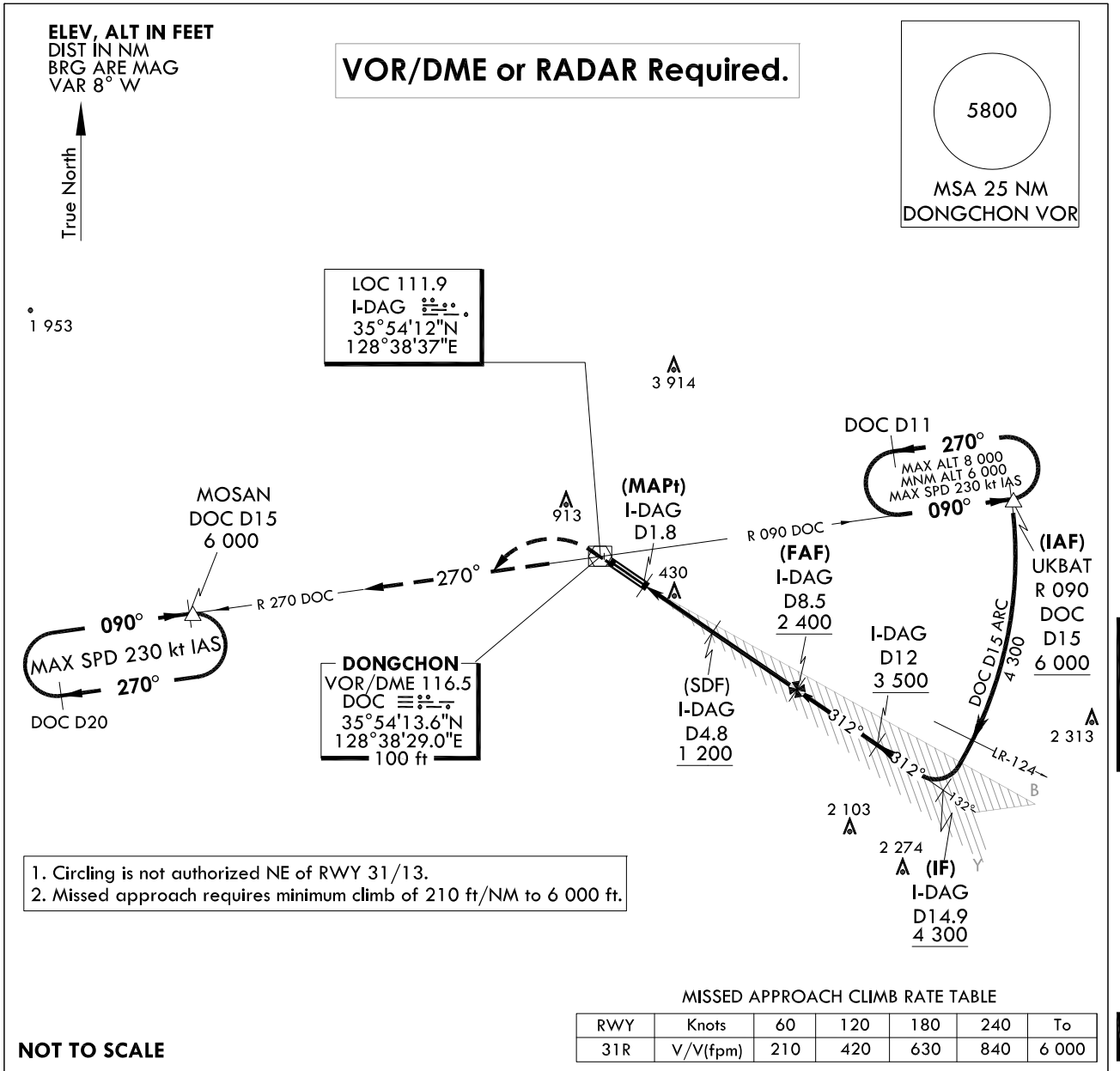
INSTRUMENT APPROACH CHART

AERODROME ELEV 120 ft
HEIGHTS RELATED TO
THR RWY 31R - ELEV 120 ft
HIGHEST ELEV TDZ 120 ft

DAEGU APP 135.9 346.3
DAEGU TWR 126.2 236.6
365.0

DAEGU/Daegu Intl(RKTN)
LOC/DME
RWY 31R

Note : Approach and circle to land under U.S. TERPS.

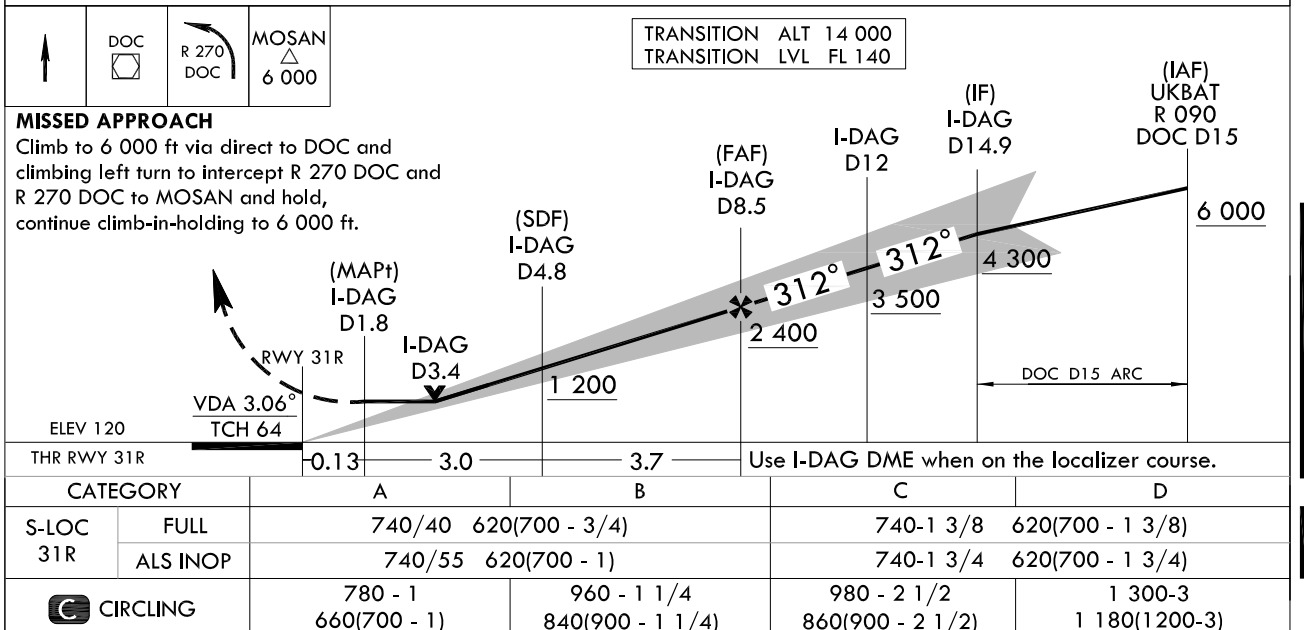


1. Circling is not authorized NE of RWY 31/13.
2. Missed approach requires minimum climb of 210 ft/NM to 6 000 ft.

MISSED APPROACH CLIMB RATE TABLE

RWY	Knots	60	120	180	240	To
31R	V/V(fpm)	210	420	630	840	6 000

NOT TO SCALE



Change : Information instrument approach procedure for RWY 31R.

INTENTIONALLY

LEFT

BLANK

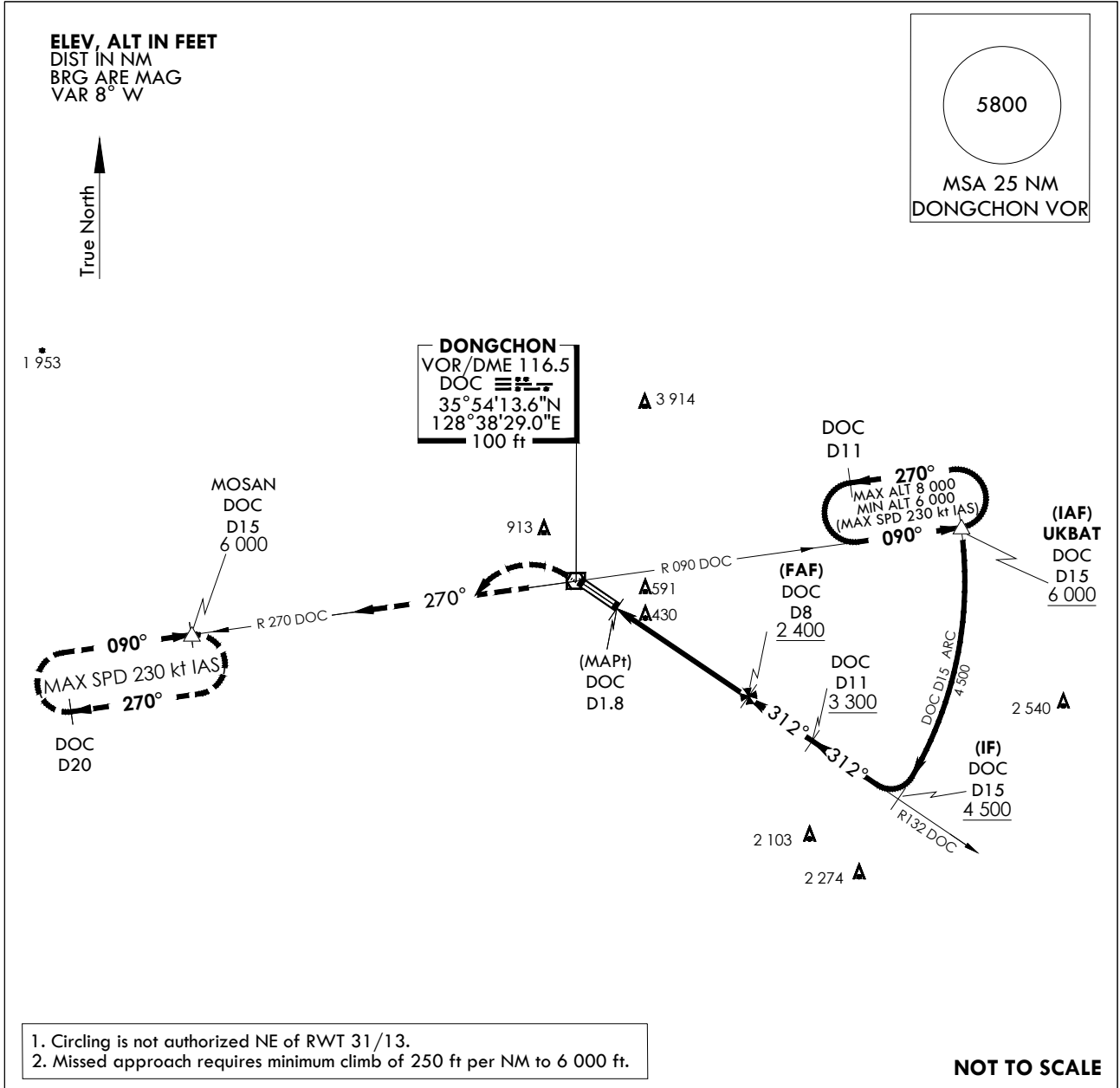
**INSTRUMENT
APPROACH
CHART**

AERODROME ELEV 120 ft
HEIGHTS RELATED TO
THR RWY 31R - ELEV 120 ft
HIGHEST ELEV TDZ 120 ft

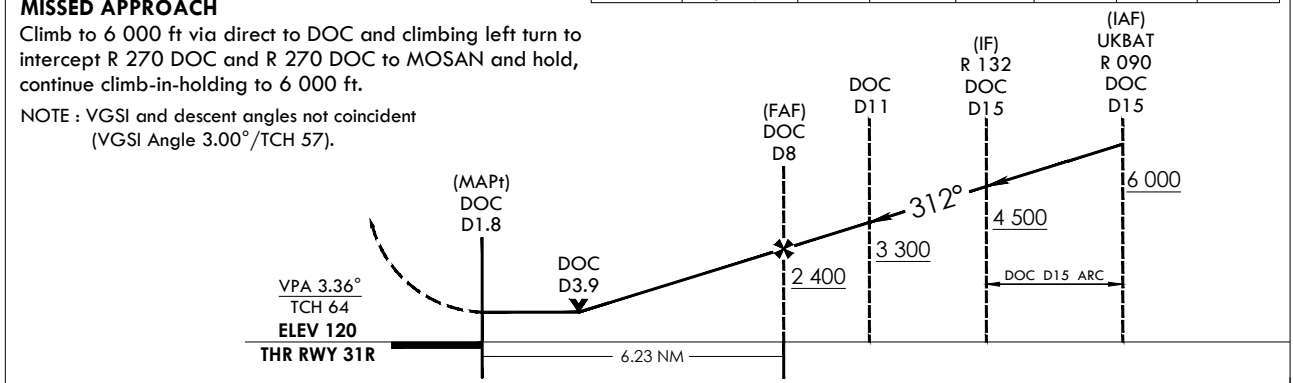
DAEGU APP	135.9	346.3
DAEGU TWR	126.2	236.6
		365.0

**DAEGU/Daegu Intl(RKTN)
VOR/DME
RWY 31R**

Note : Approach and circle to land under U.S. TERPS.



RWY	Knots	60	120	180	240	300	TO
31R	V/V(fpm)	250	470	700	930	1 160	6 000



CATEGORY		A	B	C	D
S-VOR 31R	FULL	880/40 760(800 - 3/4)		880-1 3/4 760(800-1 3/4)	
	ALS INOP	880/55 760(800 - 1)		880-2 760(800-2)	
CIRCLING		880 - 1 760(800 - 1)	960 - 1 1/4 840(900 - 1 1/4)	980 - 2 1/2 860(900 - 2 1/2)	1 300-3 1 180(1 200-3)

Change : Information of fix name(NUKEE → UKBAT).

INTENTIONALLY

LEFT

BLANK